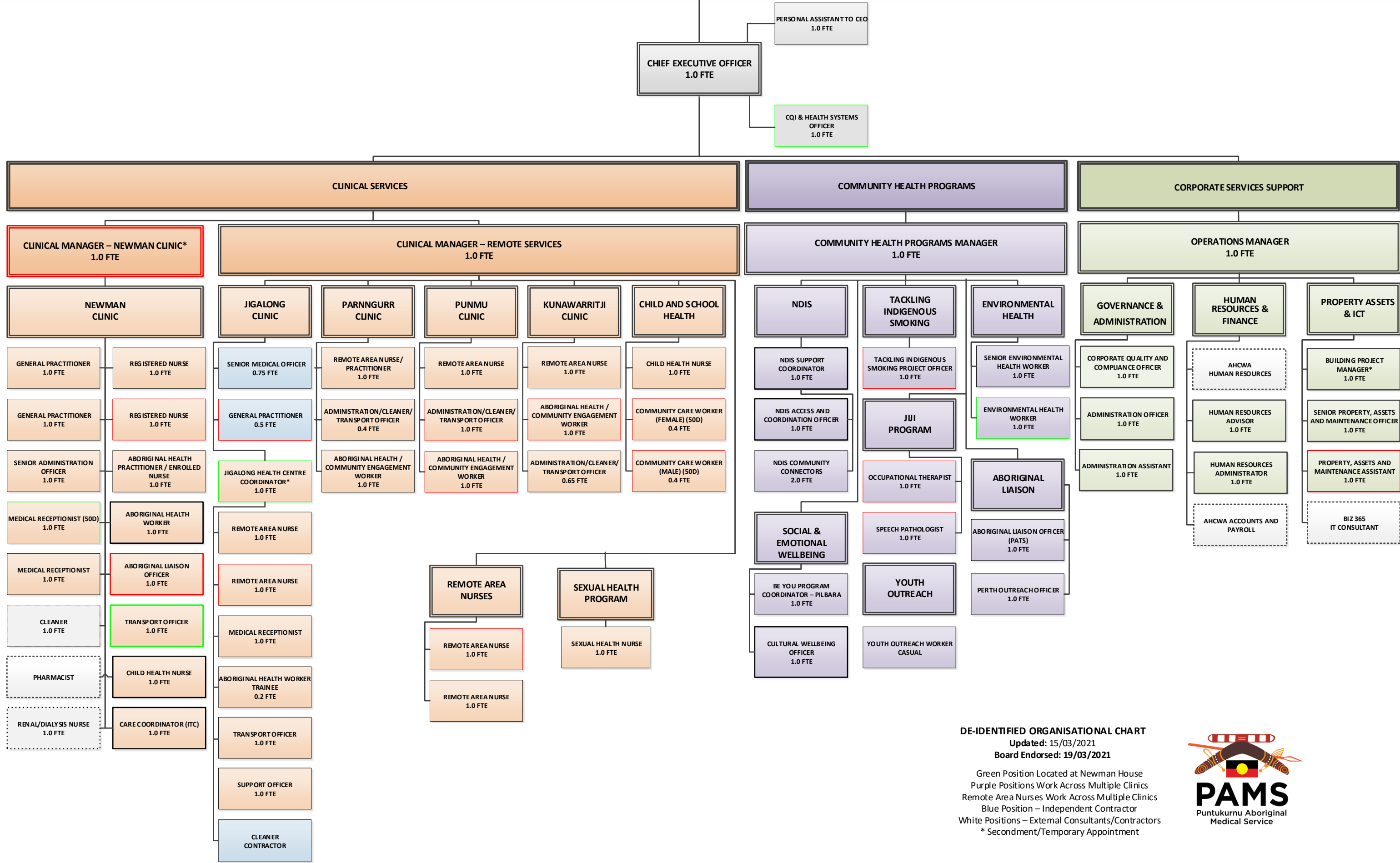


PUNTUKURNU ABORIGINAL MEDICAL SERVICE MEMBERS

PUNTUKURNU ABORIGINAL MEDICAL SERVICE BOARD OF DIRECTORS



DE-IDENTIFIED ORGANISATIONAL CHART
 Updated: 15/03/2021
 Board Endorsed: 19/03/2021

Green Position Located at Newman House
 Purple Positions Work Across Multiple Clinics
 Remote Area Nurses Work Across Multiple Clinics
 Blue Position – Independent Contractor
 White Positions – External Consultants/Contractors
 * Secondment/Temporary Appointment



