

PUNTUKURNU ABORIGINAL MEDICAL SERVICE
MEMBERS

PUNTUKURNU ABORIGINAL MEDICAL SERVICE
BOARD OF DIRECTORS

CHIEF EXECUTIVE OFFICER
1.0 FTE

PERSONAL ASSISTANT TO CEO
1.0 FTE

CQI & HEALTH SYSTEMS
OFFICER
1.0 FTE

CLINICAL SERVICES

COMMUNITY HEALTH PROGRAMS

CORPORATE SERVICES SUPPORT

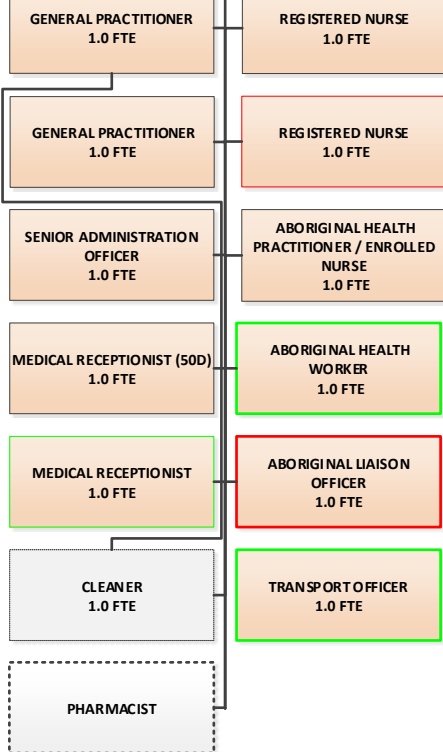
CLINICAL MANAGER – NEWMAN CLINIC*
1.0 FTE

CLINICAL MANAGER – REMOTE SERVICES
1.0 FTE

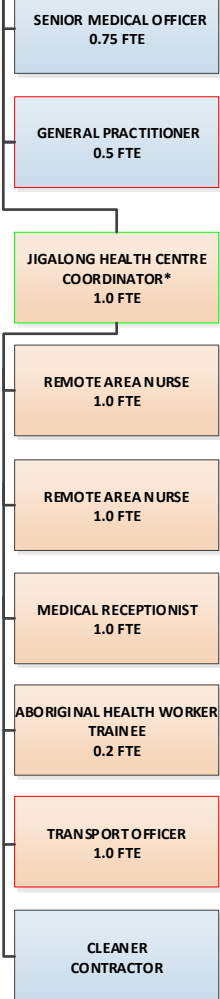
COMMUNITY HEALTH PROGRAMS MANAGER
1.0 FTE

OPERATIONS MANAGER
1.0 FTE

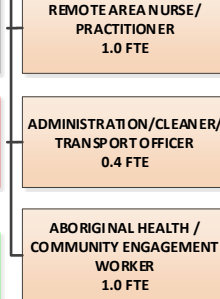
NEWMAN
CLINIC



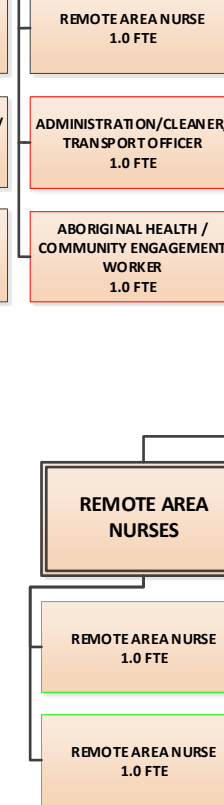
JIGALONG
CLINIC



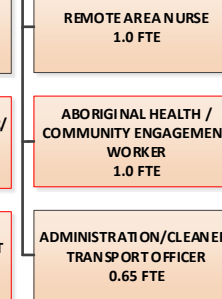
PARNGURR
CLINIC



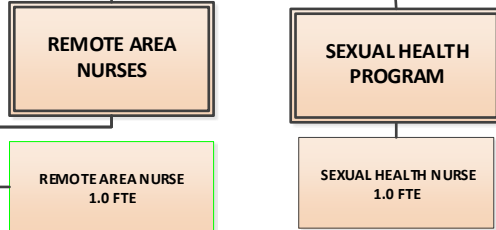
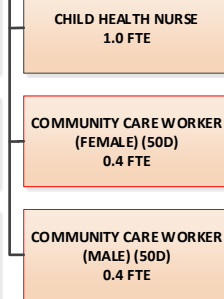
PUNMU
CLINIC



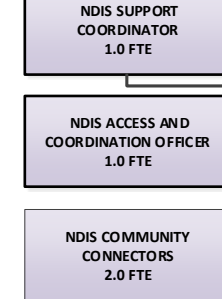
KUNAWARRITJI
CLINIC



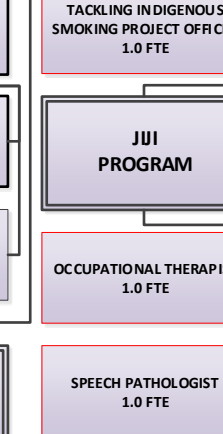
CHILD AND SCHOOL
HEALTH



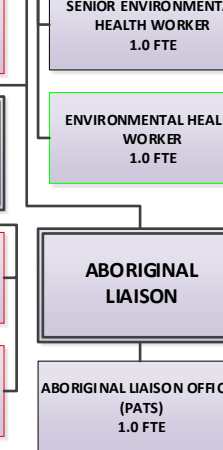
NDIS



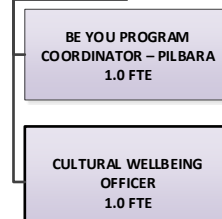
TACKLING
INDIGENOUS
SMOKING



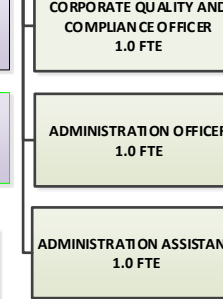
ENVIRONMENTAL
HEALTH



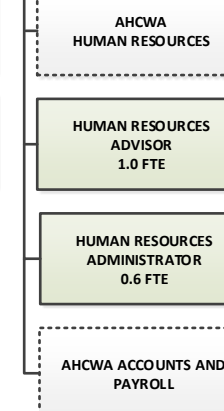
SOCIAL &
EMOTIONAL
WELLBEING



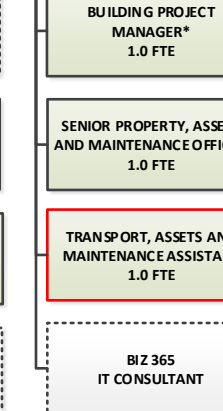
GOVERNANCE &
ADMINISTRATION



HUMAN
RESOURCES &
FINANCE



PROPERTY ASSETS
& ICT



DE-IDENTIFIED ORGANISATIONAL CHART

Updated: 08/02/2021

Board Endorsed: 09/02/2021

Green Position Located at Newman House
Purple Positions Work Across Multiple Clinics
Remote Area Nurses Work Across Multiple Clinics
Blue Position – Independent Contractor
White Positions – External Consultants/Contractors
* Secondment/Temporary Appointment



