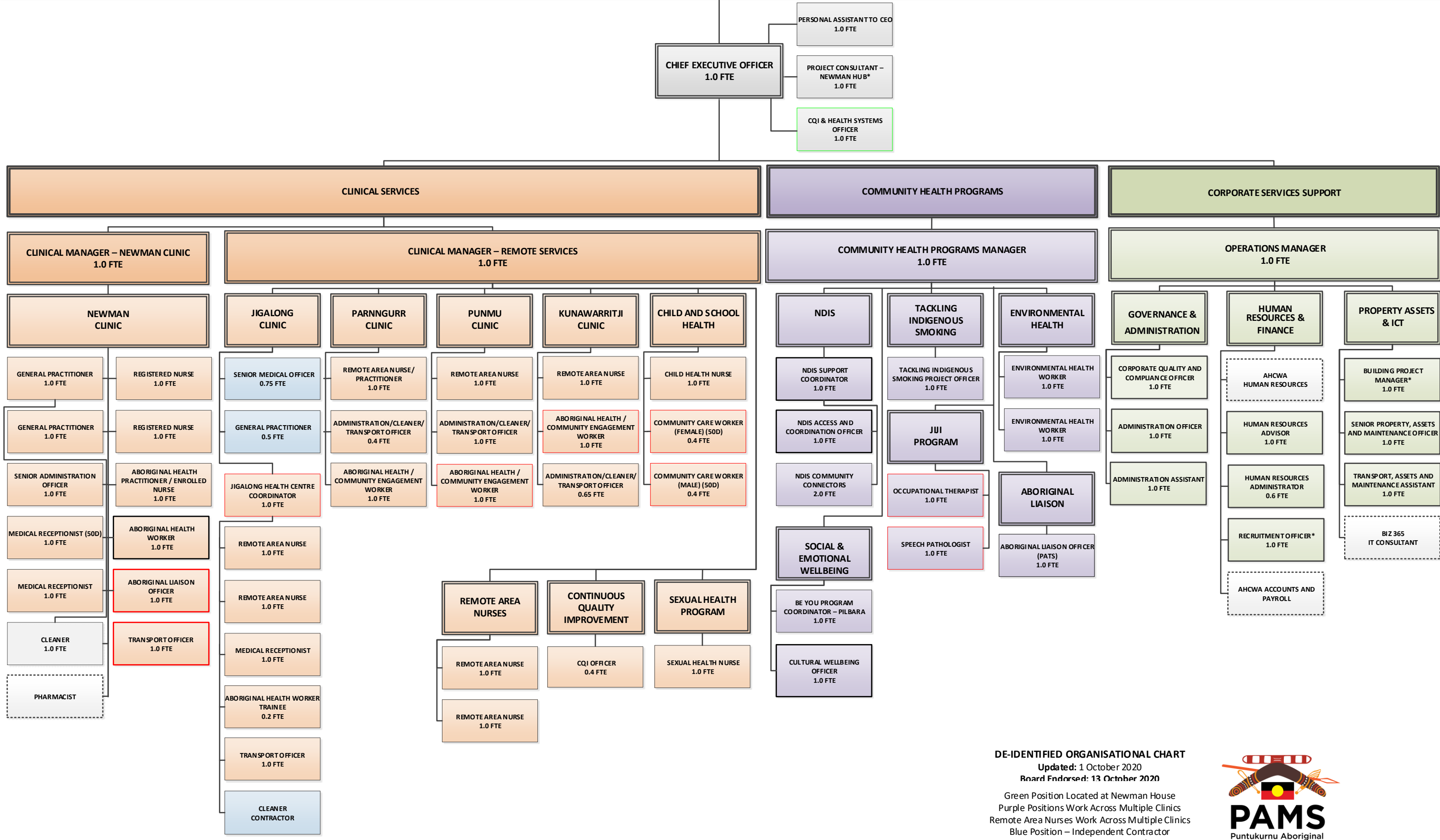


PUNTUKURNU ABORIGINAL MEDICAL SERVICE MEMBERS

PUNTUKURNU ABORIGINAL MEDICAL SERVICE BOARD OF DIRECTORS



DE-IDENTIFIED ORGANISATIONAL CHART
 Updated: 1 October 2020
 Board Endorsed: 13 October 2020

Green Position Located at Newman House
 Purple Positions Work Across Multiple Clinics
 Remote Area Nurses Work Across Multiple Clinics
 Blue Position – Independent Contractor
 White Positions – External Consultants/Contractors
 * Secondment/Temporary Appointment



